



SPICER™

Spec the Dana Difference

Spicer AdvanTEK® 40 Pro Drive Axles

High power density axles built to be the most reliable 6x4 in the industry.

Spicer AdvanTEK® 40 Pro Drive Axles
**DELIVER DURABILITY
& EFFICIENCY**

Supports up to
1,950
FT-LB Engine Torque
@500 hp

SPL® 250 HT, SPL® 350 HT & SPL® 350 HD Driveshafts
25% HIGHER POWER DENSITY

Spicer® Lightweight E-Series Steer Axles
STRONGER & LIGHTER
than competing products

Dana Driveline System Solution

Backed by one of the industry's most competitive warranty programs, this full driveline system includes Spicer® Lightweight E-Series steer axles and SPL® 250 or 350 driveshafts, and is available with service-free options plus AdvanTEK® 40 Pro drive axles. By virtue of its 37-lb. reduction in weight, the driveline system helps your fleet operate more efficiently to enhance your productivity and profitability.

Spicer® E-Series Steer Axles

E-1002I, E-1002W, E-1252IL, E-1252LW, E-1322IL, E-1322LW



UP TO
35
POUNDS LESS
THAN EXISTING
MODELS



Same-side, two-drawkey and spring-washer retention system improves durability and camber alignment while reducing tire wear and maintenance.



Tie rod end featuring sealed boot and patented grease purge valve reduces contaminants to increase life.



Patented compressible insert increases joint life and reduces contamination.

- Durable and lighter than competing products
- Exceptional turn angle radius via integral arm knuckle design

SPL® 250 HT, SPL® 350 HT, and SPL® 350 HT Driveshafts

- SPL 250 HT "Lite": 25,000 N·m / 18,439 ft·lb
- SPL 350 HT "Lite": 30,000 N·m / 22,127 ft·lb
- SPL 350 HD: 35,000 N·m / 25,815 ft·lb

Engineered to deliver greater torque, durability, and savings for severe-duty, low-emission, high-efficiency trucks.

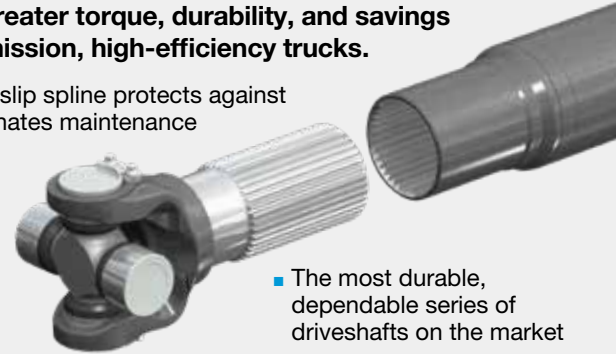
- Permanently lubricated slip spline protects against contaminants and eliminates maintenance



Optional permanently lubricated u-joint with extended warranty requires no lubrication for the life of the product.



Increased tube diameter and decreased wall thickness offer greater strength without the weight, enabling greater load capacity.



- The most durable, dependable series of driveshafts on the market

AdvanTEK® 40 Pro D155 40,000 lb Tandem Axles

30%
HIGHER INPUT
TORQUE
CAPACITY



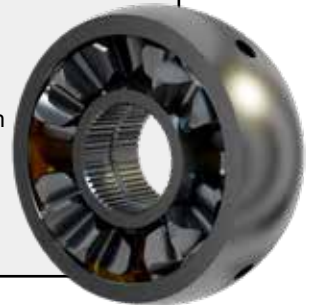
Innovative Venturi® Cover

- Directs lubrication where needed
- Reduces lube volume and churning losses
- Reduces trim losses and complexity

UP TO
37
POUNDS LIGHTER
THAN STANDARD
AXLE

New! Patented Inter-Axle Differential

- Superior lubrication retention and greater spin-out protection
- Cup design holds lubricant into the housing better than previous design
- High-performance coating to further improve spin-out protection
- Pinned spider provides additional strength vs. free-floating designs



Improved Hypoid Position

- Delivers renowned Spicer durability and efficiency
- Capable of handling the added torque associated with engine downspeeding for the long haul



Improved Dana Tandem Position

AdvanTEK® 40 Pro D40-155 Axle	Max. GAW 40,000 lbs. / 18,144 kg Max. GCW* Turnpike 145,000 lbs. / 65,771 kg	2.05, 2.16, 2.26, 2.39, 2.47, 2.53, 2.64, 2.79, 2.93, 3.08, 3.23, 3.36, 3.42, 3.55, 3.70, 3.91
--------------------------------------	---	---

*Rating is subject to Dana Engineering application approval. For 3% max. grade.

Dana.com/CV

Application Policy

The statements provided herein are for general informational purposes only and should not be relied upon as a guarantee of performance or suitability. All claims and actual product features and capabilities are subject to applicable product specifications and documentation. Capacity ratings, features, and specifications vary depending upon the model and type of service. Application approvals must be obtained from Dana; contact your representative for application approval. We reserve the right to change or modify our product specifications, configurations, or dimensions at any time without notice.

